

CERTIFICATE OF LOCATION OF GOVERNMENT CORNER

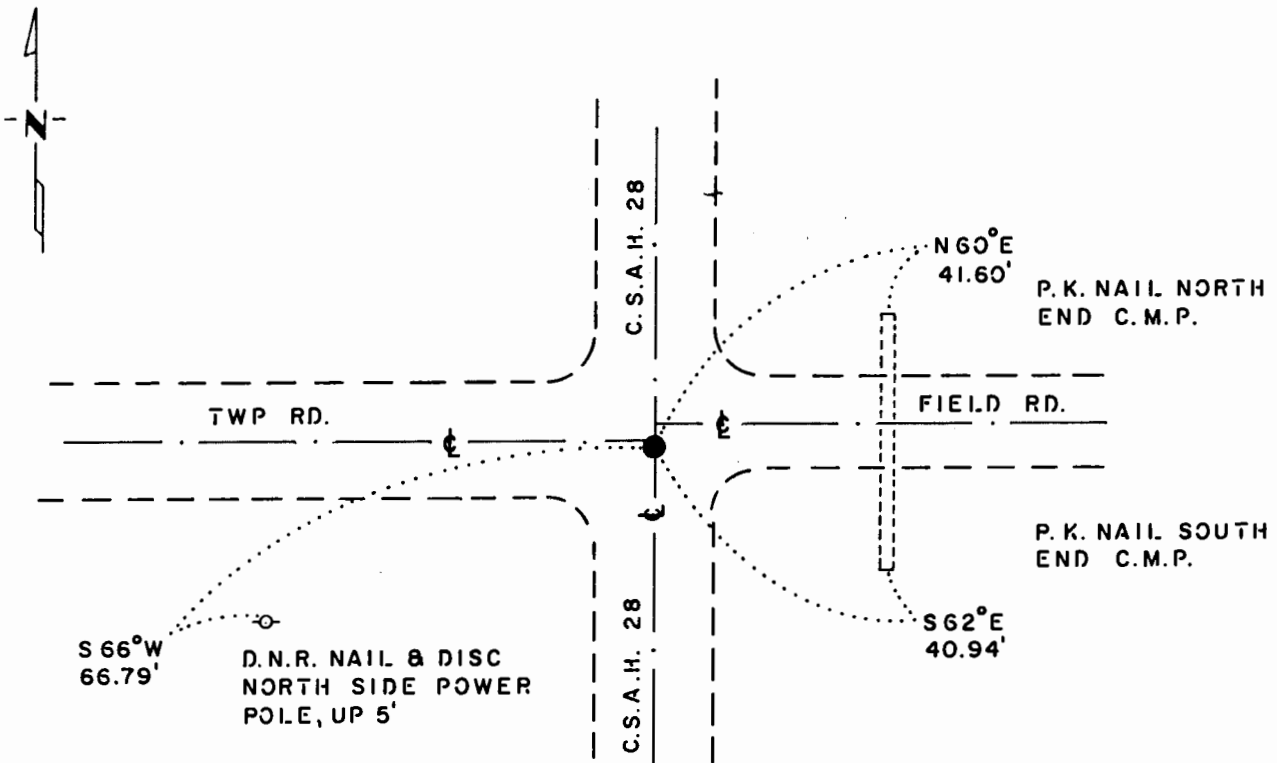
NORTHEAST Corner of Section 20, Township 106 N., Range 42 W., 5th P.M.

STATE OF MINNESOTA, County of MURRAY

At the corner location shown on the sketch:

- On 11-3-83 found a 3/4" x 8" REBAR, DOWN 0.3', OVER A 10" x 12" x 18" FIELD
DATE STONE, DOWN 26"
 - left monument as found, lowered monument, removed monument (explain)
- On 11-3-83 placed a 1 1/4" x 1 1/4" x 20" PERFORATED STEEL TUBE WITH
DATE ALUMINUM CAP STAMPED "D.N.R. SURVEY MARKER", OVER STONE, DOWN 0.4'

SKETCH OF REFERENCE TIES



NOTE:
 MONUMENT IS
 ON ϵ N-S ROAD
 1' SOUTH OF ϵ ROAD TO WEST
 4' SOUTH OF ϵ FIELD ROAD TO EAST

BEARINGS OBSERVED WITH COMPASS

Statement of evidence relative to this corner location is on back of page.

J.B.M. 4-2-84
G-1158

I hereby certify that this document and the data contained herein was prepared by me or under my direct supervision.

Lowell R. Pomeroy 6-16-86
SIGNATURE DATE

Registration No. 17005

- Land Surveyor, Professional Engineer
- County Surveyor, County Engineer

OFFICE OF THE COUNTY RECORDER

County of _____

I hereby certify that this document was filed in the Co. Recorders office at _____ .M. on the _____ day of _____ A.D., 19 _____

County Recorder _____

By _____, Deputy

DOCUMENT NO. _____

Northeast Corner Section 20, Township 106 North, Range 42 West

This corner was originally established by the U. S. General Land Office survey in 1866. The government notes show corner marked with a wood post set in mound of earth with pits and trench dug around the mound.

In November 1983, the DNR Bureau of Engineering contacted the Murray County Offices of the Recorder and Highway Engineer for corner information.

The following information was obtained from the County Recorder's Office:
Surveyor's Record Book A, on Page 228, contains a survey by J. W. Woolstencraft, dated November 10, 1912. Survey shows corner is a 10" by 12" by 22" stone in the road. Corner is shown:
2640 ft. to the east quarter corner Section 20
2641 ft. to the north quarter corner Section 21

This information is also contained in a Surveyor's Record Book in the Highway Engineer's Office. Engineer's copy also has ties to the corner by F. A. March, date not indicated. Corner is a stone with ties:

- R.P. tack in southeast corner fence post, 47.5 ft.
- R.P. tack in southwest corner fence post, 44.0 ft.
- R.P. tack in northwest corner fence post, 45.2 ft.

Surveyor's Record Book A, on Page 229 contains a survey by J. W. Woolstencraft, dated November 20, 1912. Survey states see Section 20 survey (Page 228). Survey on Page 229 shows a distance of 2643 ft. to the north quarter corner Section 21.

This information is also contained in a Surveyor's Record Book in the Highway Engineer's Office.

On November 3, 1983, the DNR Bureau of Engineering hired a backhoe operated by Johnson Tiling of Lake Wilson to dig for evidence of this corner. Found a 3/4" by 8" rebar down 0.3 ft. over a 10" by 12" by 18" field stone down 26" at natural ground. Left stone as found and set the rebar on north side of stone. Searched for, but found no evidence of record ties. Stone measures:

- 2643.10 ft. from the north quarter corner Section 21
- 2637.65 ft. from the east quarter corner Section 20

Accept the found stone as the location of the corner.

Traverse information is available from the DNR Bureau of Engineering.

7hab/cors